

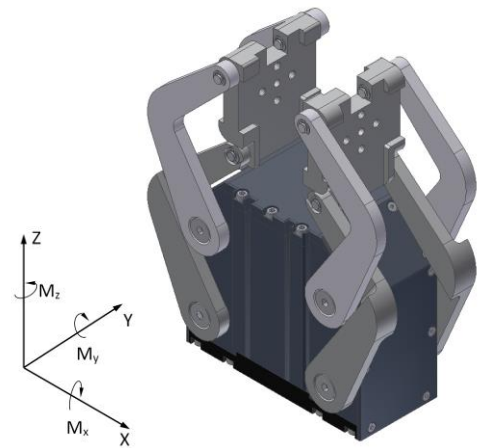


2-Finger-Parallel-Angular-Gripper

- PW106 -

Characteristics:

- internal and external grip
- parallel finger movement
- fingers swivel more than 100° sideways
- enormous stroke
- high grip force
- short cycle time
- completely sealed mechanics
- user defined installation position
- maintenance and lubrication free for several million gripping cycles
- robust and compact design
- multiple position checks through proximity switches (optional)



Picture: PW106-ON-00

Technical Data:

Type		PW106
Stroke		326 mm
Gripping Range		110 mm – 436 mm
Grip Force (at 6 bar) *		225 N** – 6.000 N
Drive		pneumatic
Operating Pressure		2.5 to 8 bar
Cycle Time (at 6 bar)	Open	1,5 s
	Close	1,5 s
Energy Consumption per Cycle (at 6 bar)		1,2 liter
Operating Temperature		-30 to +80°C
Mass		5,8 kg
Loading Capacity per Finger with Object Mass and Acceleration	$M_{x \max.}$	80 Nm
	$M_{y \max.}$ (Gripping)	230 Nm
	$F_{z \max.}$	30.000 N
	$M_{z \max.}$	75 Nm

* perpendicular force exerted on the jaw holder

** depending on the aperture angle (see force diagram)



Address:

GMG – Global Modular Grippers
 Rodingerweg 8H
 D-59494 Soest
 (Germany)

Phone:

+49 (0)2921 – 4062

Fax:

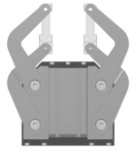
+49 (0)2921 - 4042

E-Mail:

info@gmg-system.com

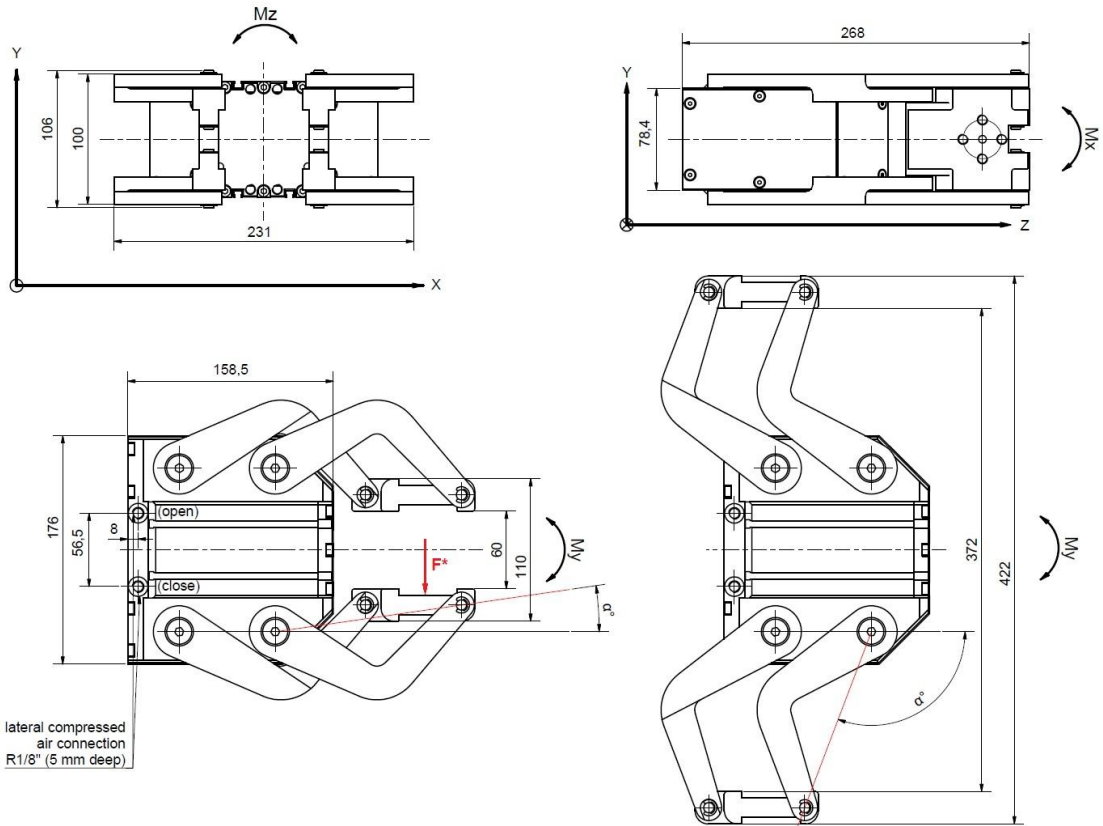
Internet:

http://www.gmg-system.com



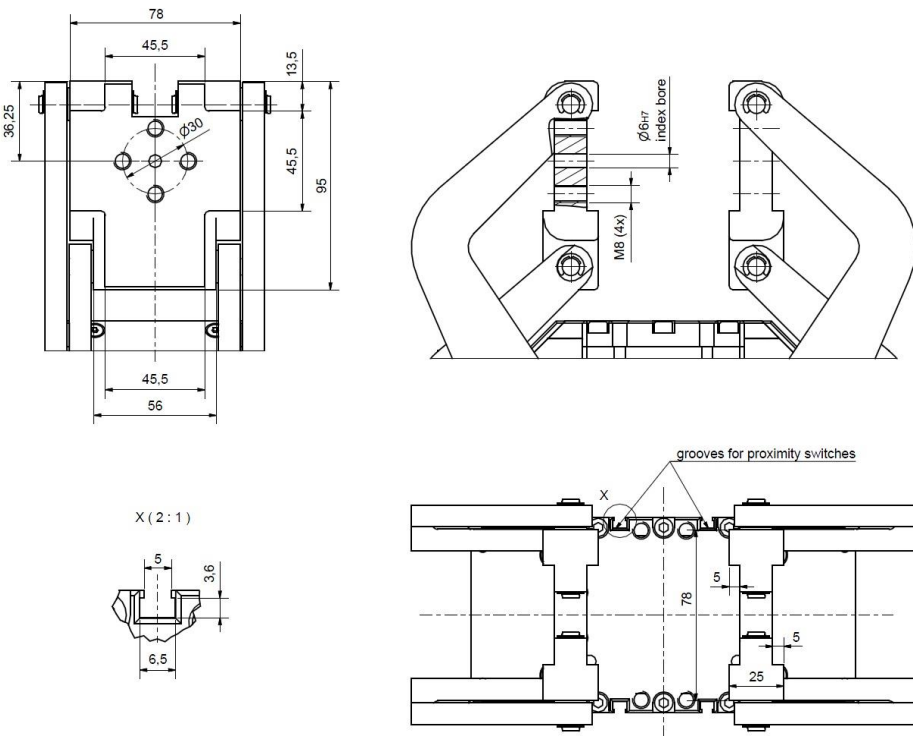
PW106

Dimension Sheet



Parallel-Angular-Gripper PW106

Jaw Holder



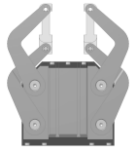
Address:
GMG – Global Modular Grippers
 Rodingerweg 8H
 D-59494 Soest
 (Germany)

Phone:
 +49 (0)2921 – 4062

Fax:
 +49 (0)2921 - 4042

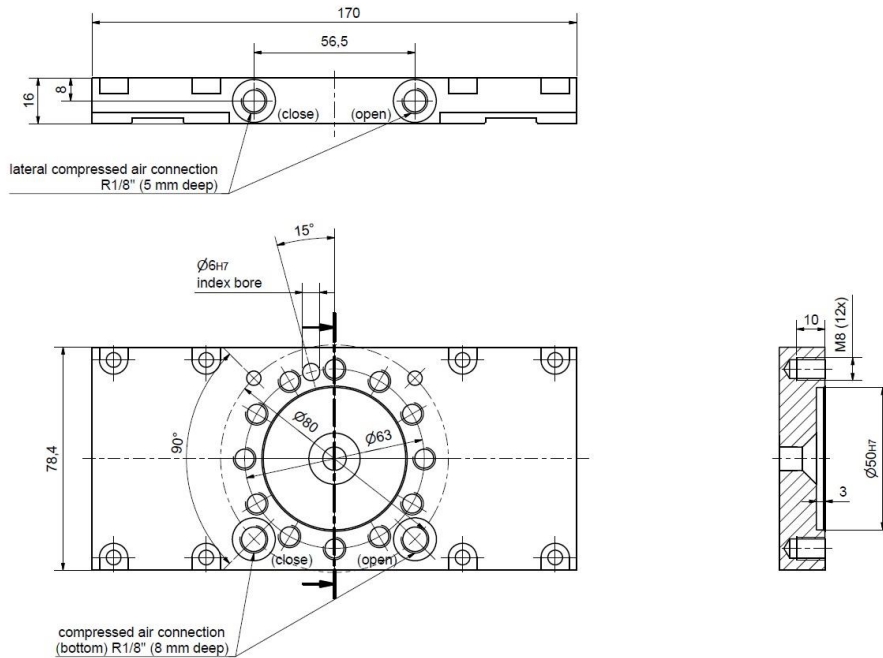
E-Mail:
 info@gmg-system.com

Internet:
 http://www.gmg-system.com



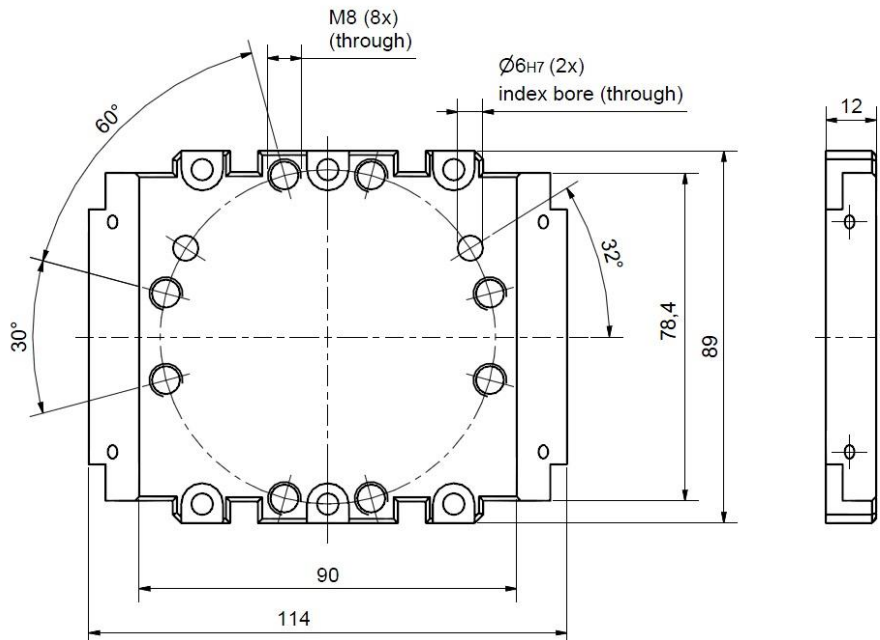
PW106

Standard Flange



For mounting the gripper to an industrial robot

Mounting Holes for a Head Flange



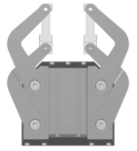
For mounting the gripper to an industrial robot (optional)



Address:
GMG – Global Modular Grippers
Rodingerweg 8H
D-59494 Soest
(Germany)

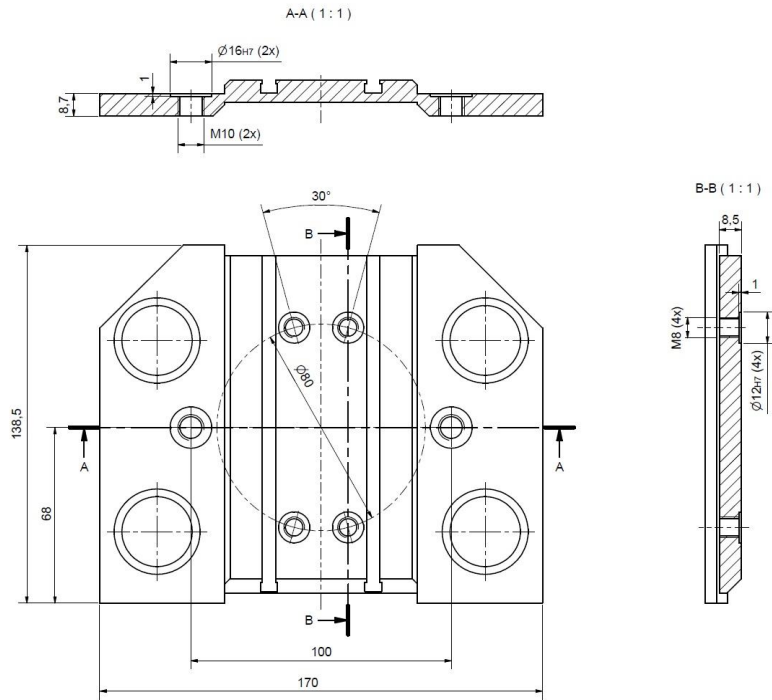
Phone:
+49 (0)2921 – 4062
Fax:
+49 (0)2921 - 4042

E-Mail:
info@gmg-system.com
Internet:
http://www.gmg-system.com



PW106

Mounting Holes for a Side Flange



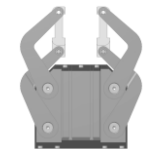
For mounting the gripper to an industrial robot (optional)



Address:
GMG – Global Modular Grippers
Rodingerweg 8H
D-59494 Soest
(Germany)

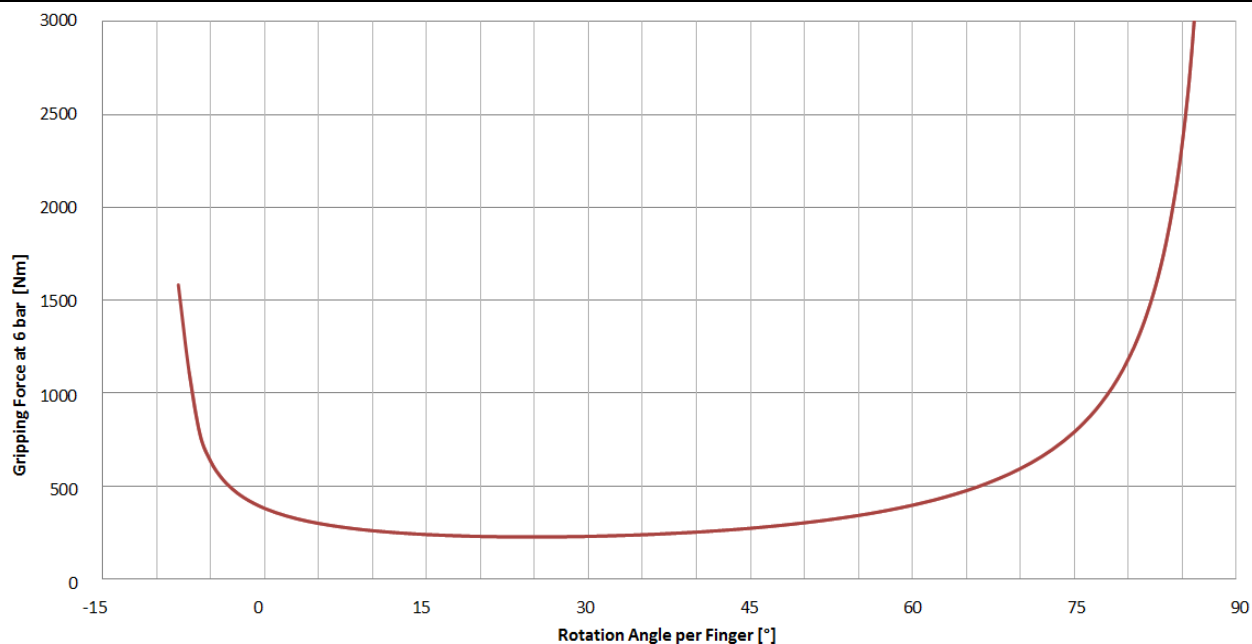
Phone:
+49 (0)2921 – 4062
Fax:
+49 (0)2921 - 4042

E-Mail:
info@gmg-system.com
Internet:
<http://www.gmg-system.com>

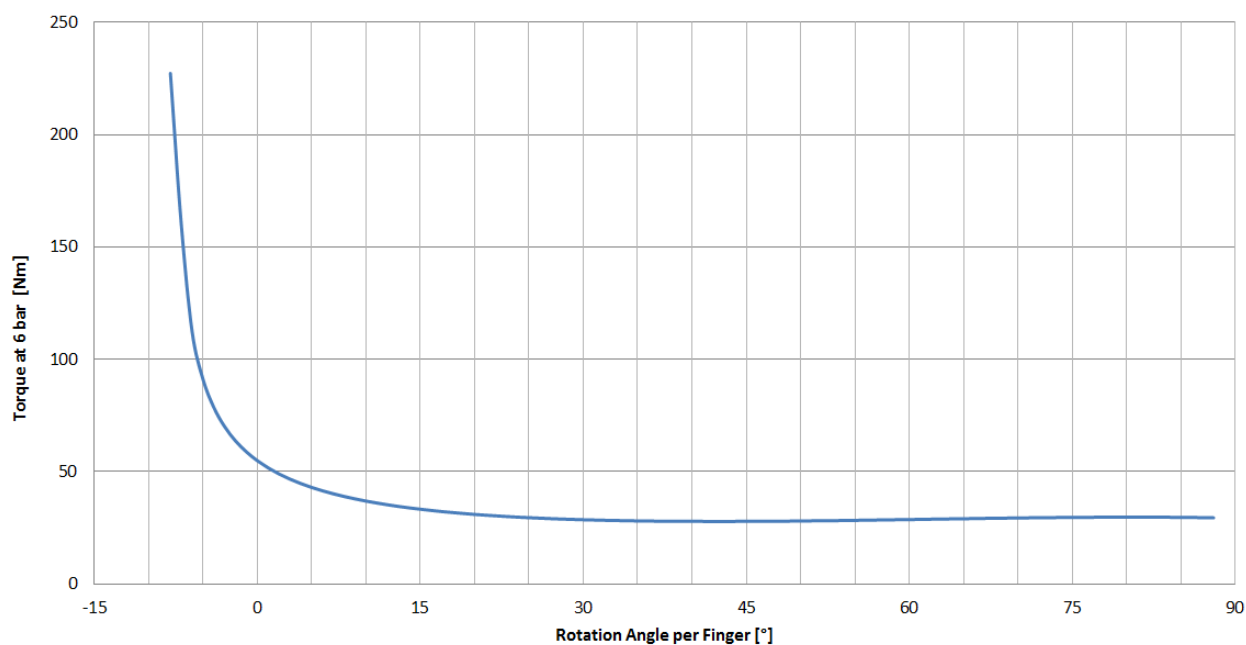


PW106

Diagrams



*) at a horizontal position of the gripper fingers (see dimension sheet) the loading capacity of the lowest fingers is up to doubled



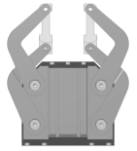
— Grip force in X direction — Torque



Address:
GMG – Global Modular Grippers
Rodingerweg 8H
D-59494 Soest
(Germany)

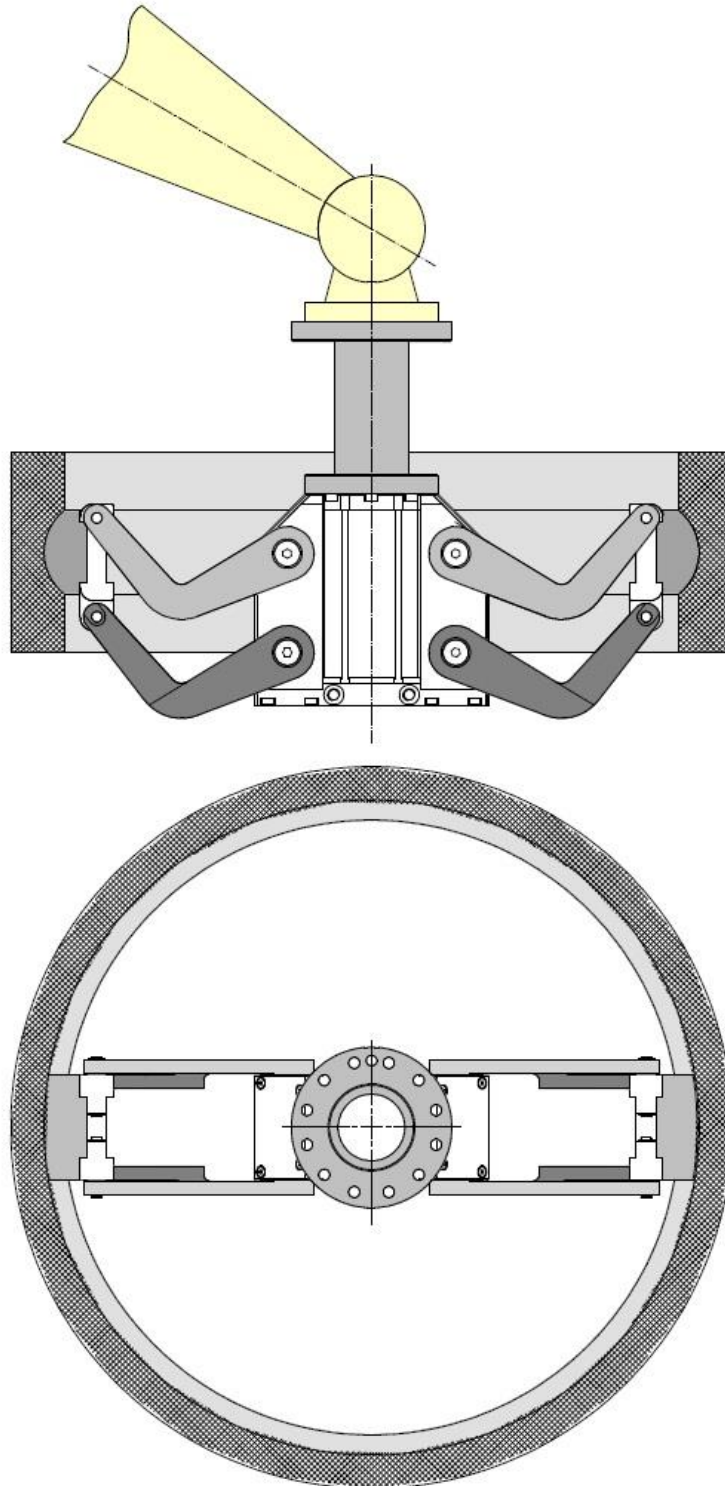
Phone:
+49 (0)2921 – 4062
Fax:
+49 (0)2921 - 4042

E-Mail:
info@gmg-system.com
Internet:
<http://www.gmg-system.com>



PW106

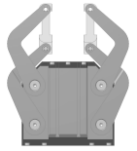
Application Examples PW106
with head flange



Address:
GMG – Global Modular Grippers
Rodingerweg 8H
D-59494 Soest
(Germany)

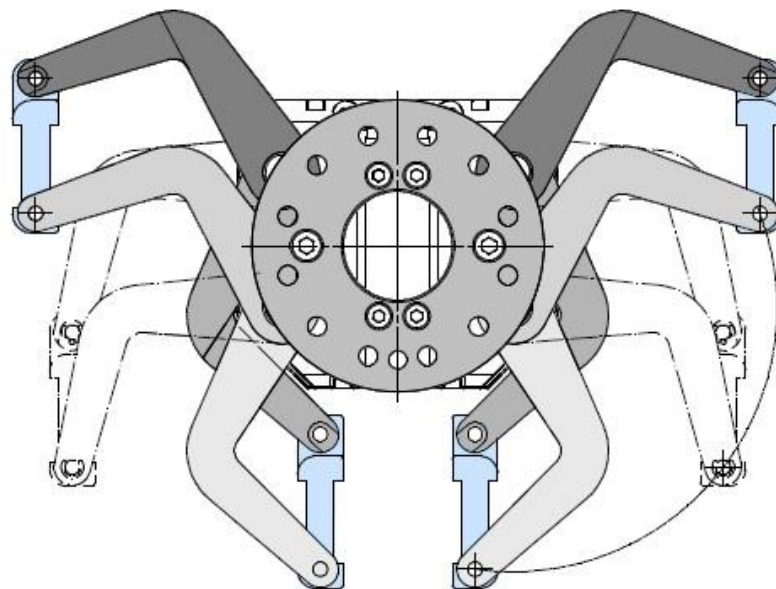
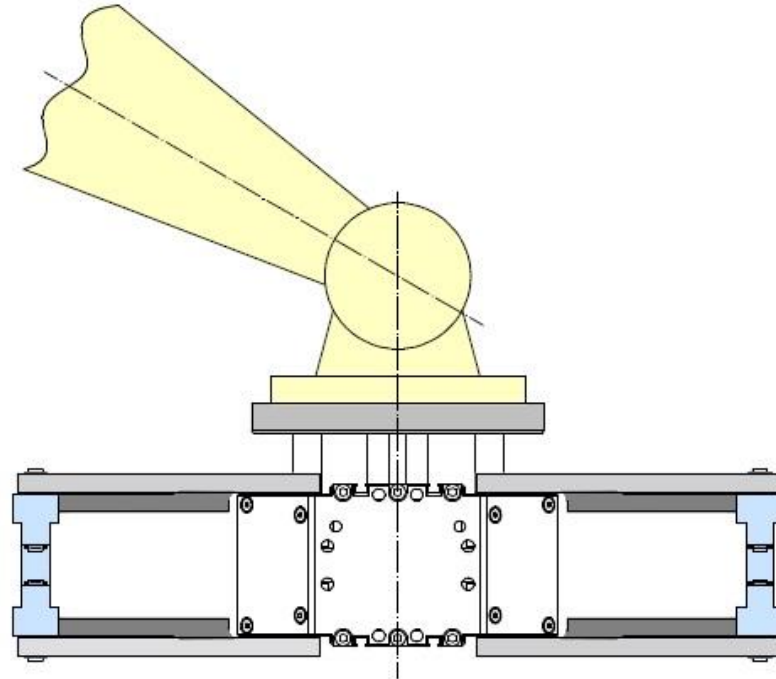
Phone:
+49 (0)2921 – 4062
Fax:
+49 (0)2921 - 4042

E-Mail:
info@gmg-system.com
Internet:
<http://www.gmg-system.com>



PW106

Application Examples PW106
with side flange



Address:
GMG – Global Modular Grippers
Rodingerweg 8H
D-59494 Soest
(Germany)

Phone:
+49 (0)2921 – 4062
Fax:
+49 (0)2921 - 4042

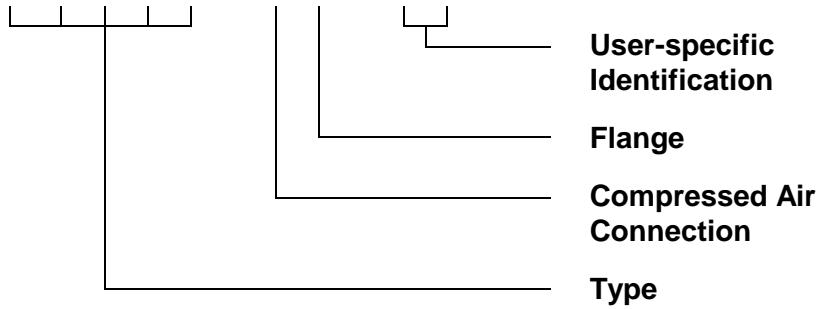
E-Mail:
info@gmg-system.com
Internet:
<http://www.gmg-system.com>



Order Number

P
W
1
0
6
-

-
0
0



Compressed Air Connection	
Design	Identifier
Compressed air connection sideways	S
Compressed air connection at the bottom (flange)	F

Flange	
Design	Identifier
with head flange	K
with standard flange	N
with side flange	S



Address:
GMG – Global Modular Grippers
 Rodingerweg 8H
 D-59494 Soest
 (Germany)

Phone:
 +49 (0)2921 – 4062
Fax:
 +49 (0)2921 - 4042

E-Mail:
info@gmg-system.com
Internet:
<http://www.gmg-system.com>